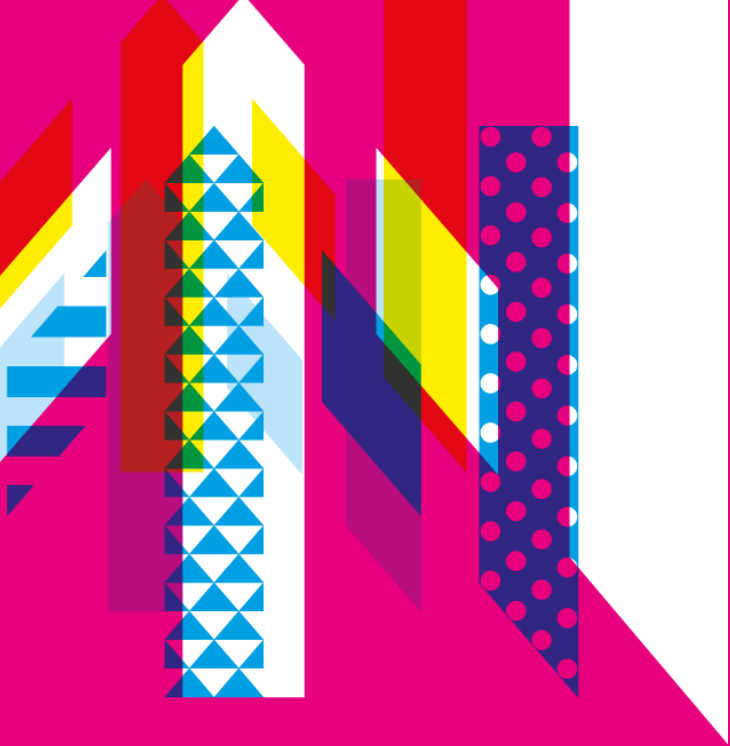




**NewcastleGateshead invites you to explore  
Great Exhibition of the North**



# GREAT EXHIBITION OF THE NORTH

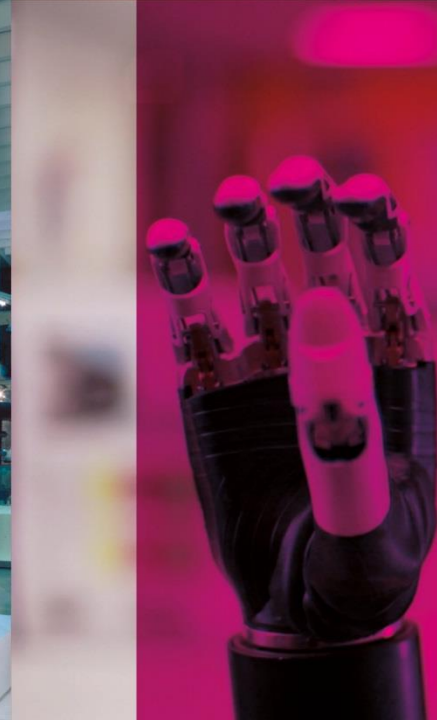
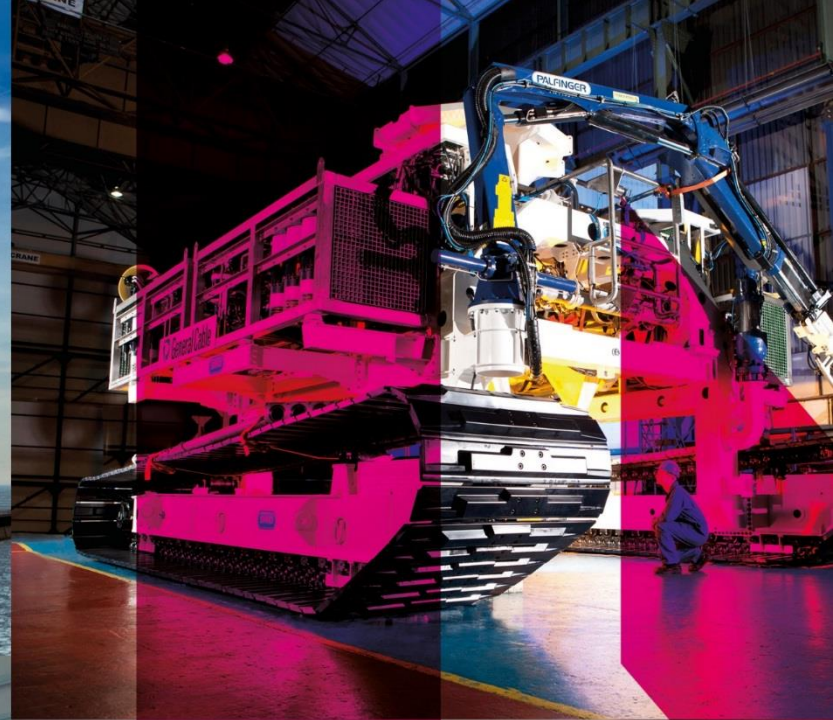
22 June – 9 September 2018  
NewcastleGateshead

**The biggest event in England in 2018!**



The Great Exhibition is a three-month celebration of the North of England's pioneering spirit and the impact of our inventors, artists and designers.

[www.getnorth2018.com](http://www.getnorth2018.com)





A city wide extravaganza with so much to see and experience.

Your itinerary will include two days hosted as a VIP guest around NewcastleGateshead taking in the very best of what is on offer.

# Proposed itinerary

## Thursday 28 June

3pm Meet Caroline Reed, NewcastleGateshead Convention Bureau on the NewcastleGateshead stand for transfer to London Kings Cross

Train travel to Newcastle approx. 2 hrs 50 mins

7.30pm Welcome reception and dinner at your 4\* hotel





# ART

Friday 29 June

Breakfast at leisure in your hotel

- 9.30am Enjoy a whole day on a hosted VIP experience of the Great Exhibition of the North
- 12pm Lunch in one of the Great Exhibition hub venues
- 4pm Enjoy some free time to explore on your own, shop or go relax and chill out somewhere in our compact city centre
- 7pm Drinks reception on the roof of the Newcastle Castle – how we got our name
- 8pm Dinner with a professional rugby player at St James Park, one of the most famous football clubs in the world and host of the European Professional Club Rugby Championships 2019. You will be joined at dinner by players from the Newcastle Falcons Rugby Club.

#getnorth2018

# DESIGN

GREAT EXHIBITION OF THE NORTH



#getnorth2018



# INNOVATION

GREAT EXHIBITION OF THE NORTH



#getnorth2018





## Saturday 30 June

Breakfast at leisure in your hotel

9.30am Continue your hosted VIP experience of the Great Exhibition of the North. With so much to see and do, you really need days to experience but we'll do our best squeezing it into two!

12pm Lunch in one of the Great Exhibition hub venues

4pm Enjoy some free to explore on your own, shop or go relax and chill out somewhere in our compact city centre

7pm Drinks reception inside the Gateshead Millennium Bridge.

This has never been experienced by anyone before!

A completely unique and very special experience, on the iconic cityscape that is NewcastleGateshead taking in the spectacular evening performances of the water sculptures on the river Tyne, performing to music and with lighting, this will be unforgettable.

8.30pm Dinner in Sage Gateshead – the iconic home of the Royal Northern Sinfonia and a national jewel of an events venue.

# Sunday 30 June

Breakfast at leisure in your hotel

10.00am Broomstick Flying and a Downton Abbey inspired, elegant lunch at Alnwick Castle, home to the Duke and Duchess of Northumberland, a popular film location and venue for up to 500 guests.

Located less than one hour North of Newcastle, we'll depart on coach from your hotel at 9am

12.00pm Lunch in Alnwick Castle

1.00pm Coach heads back to Newcastle

2.00pm Depart from Newcastle Central Train Station

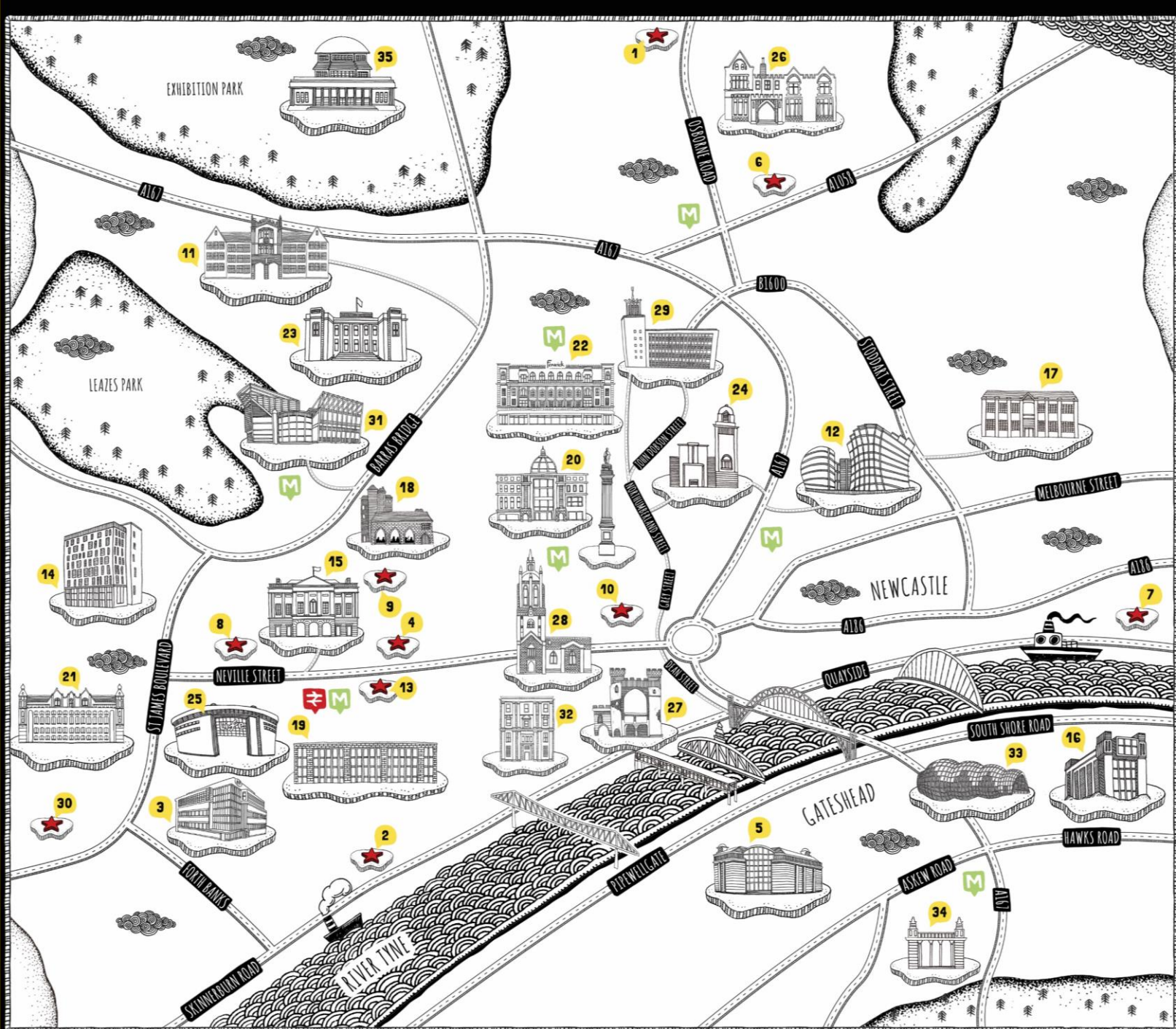
\*Itinerary subject to change





# A destination tailored for you





**Residential venues:**

- 1 Cairn Hotel Newcastle
- 2 Copthorne Hotel
- 3 Crowne Plaza Newcastle
- 4 Hampton by Hilton
- 5 Hilton Newcastle Gateshead
- 6 Holiday Inn Newcastle - Jesmond
- 7 Hotel du Vin
- 8 Hotel Indigo
- 9 Maldron Hotel Newcastle
- 10 Motel One
- 11 Newcastle University
- 12 Northumbria University
- 13 Royal Station Hotel
- 14 Science Central

**Non-residential venues:**

- 15 The Assembly Rooms
- 16 BALTIC Centre for Contemporary Art
- 17 The Biscuit Factory
- 18 Blackfriars
- 19 Boiler Shop
- 20 The Botanist
- 21 Discovery Museum
- 22 Fenwick
- 23 Great North Museum: Hancock
- 24 Laing Art Gallery
- 25 Life Meetings and Events
- 26 Mansion House
- 27 Newcastle Castle
- 28 Newcastle Cathedral
- 29 Newcastle Civic Centre
- 30 Newcastle College
- 31 Newcastle United Football Club
- 32 The Old Post Office
- 33 Sage Gateshead
- 34 The Shipley Art Gallery
- 35 Wylam Brewery

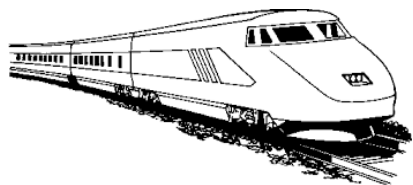


# Globally Accessible

- Newcastle International Airport (NCL) is just 15 minutes' from the city centre and is connected directly to over **80 destinations**. The route from the airport to the city centre is one of the fastest in Europe!
- There are several daily flights to the **major European hub airports**; Heathrow, Amsterdam Schiphol, Paris CDG & Dublin. As well as daily flights to Dubai with Emirates and many domestic routes.



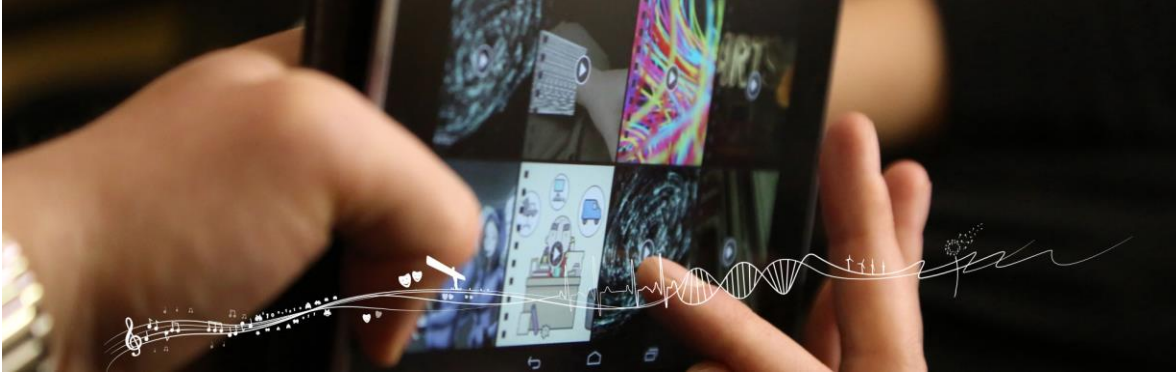
- Almost **200 trains** arrive into NewcastleGateshead every day from across the UK, over 40 of which are direct from London Kings Cross (Less than 3 hours!)



LONDON	MANCHESTER	EDINBURGH	YORK
RAIL 2HR 50MINS AIR 1HR 15MINS	RAIL 2HR 50MINS	RAIL 1HR 25MINS	RAIL 1HR

# OUR GENUINELY INSPIRING SECTOR STRENGTHS

## TECH & DIGITAL



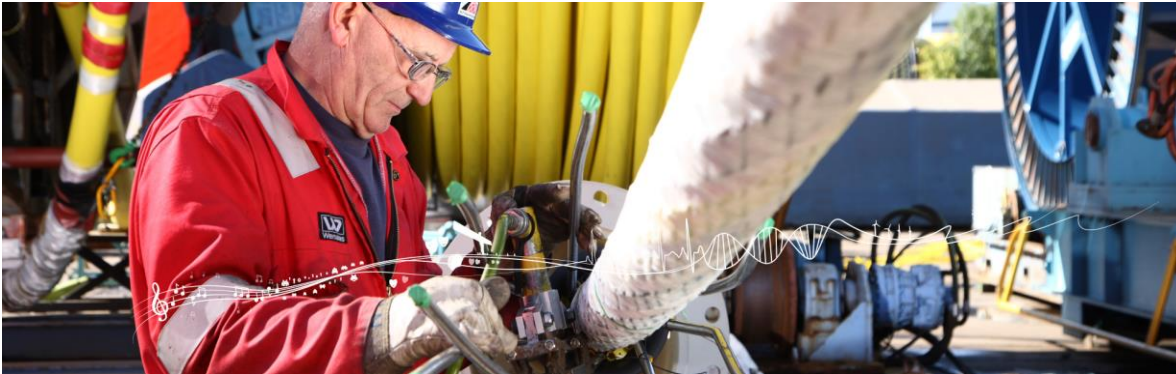
Newcastle is one of the most vibrant digital clusters outside of London, with the fastest growing digital sector in England

## BUSINESS & PROFESSIONAL SERVICES



Strong reputation in the banking, corporate finance, insurance, contact centre and shared services. All of the 'Big Four' professional service companies have operations here

## OFFSHORE & MARINE



A major centre for the renewable, offshore and subsea energy industries, Newcastle is one of six Centres for Offshore Renewable Engineering (CORE) in England

## MEDICAL SCIENCE & SUSTAINABILITY



One of only six designated UK Science Cities, Newcastle has an internationally-renowned reputation for medical sciences and sustainability



# A WORLD OF CONFERRING IN NEWCASTLEGATESHEAD

We hope you will join us in NewcastleGateshead